



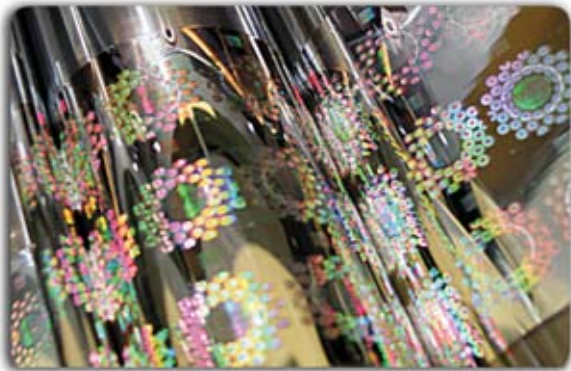
LIDOGRAM



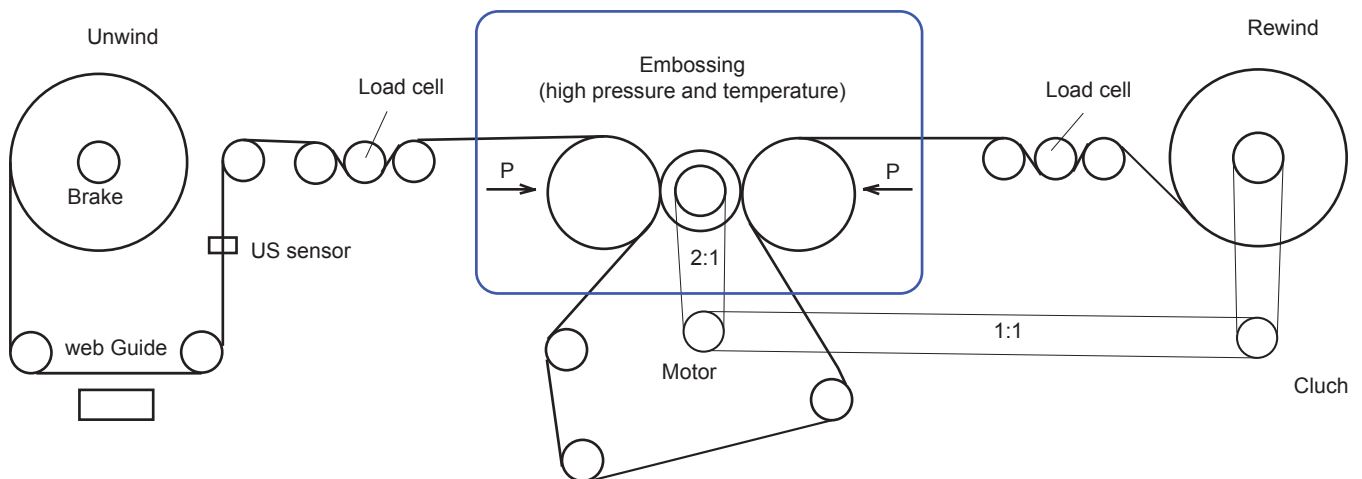
NARROW WEB EMBOSSE

NARROW WEB EMBOSSE

Embossing unit - 3 rolls (hard or compliant set)
 Automatic tension control
 Automatic control of between-frames distance
 Automatic web-guiding
 Automatic heating control
 Pneumatic 3"/76mm unwind and rewind shafts
 Splice detector



| | |
|------------------------------|------------|
| Maximum web processing speed | 30 m/min |
| Maximum roll width | 300 mm |
| Maximum roll diameter | 450 mm |
| Foil thickness | 12-100 mic |



| | |
|-------------------|---------------|
| Electrical supply | 220 V, 6 KW |
| Air supply | 6 MPa |
| Weight | 750 kg |
| Dimensions | 200/75/130 cm |

Holo East Ltd., Sofia, Bulgaria
 Phone: +359 2 9307641
 Fax: +359 2 9307643
www.holoeast.com
office@holoeast.com